



CANADIAN UTILITY CONSTRUCTION
 FORTIS BC GAS MAIN RELOCATE - PRE LOCATES
 VEDDER MOUNTAIN ROAD - CHILLIWACK

JANUARY - FEBRUARY 2017
 HOURS OF OPERATION 9:00AM - 3:00PM
 WORK WILL TAKE ONE DAY TO COMPLETE

www.invarion.com

NOTE:

ALL SIGNS ON VEDDER MOUNTAIN ROAD WILL BE PLACED ON WINDMASTERS WITH FLAGS

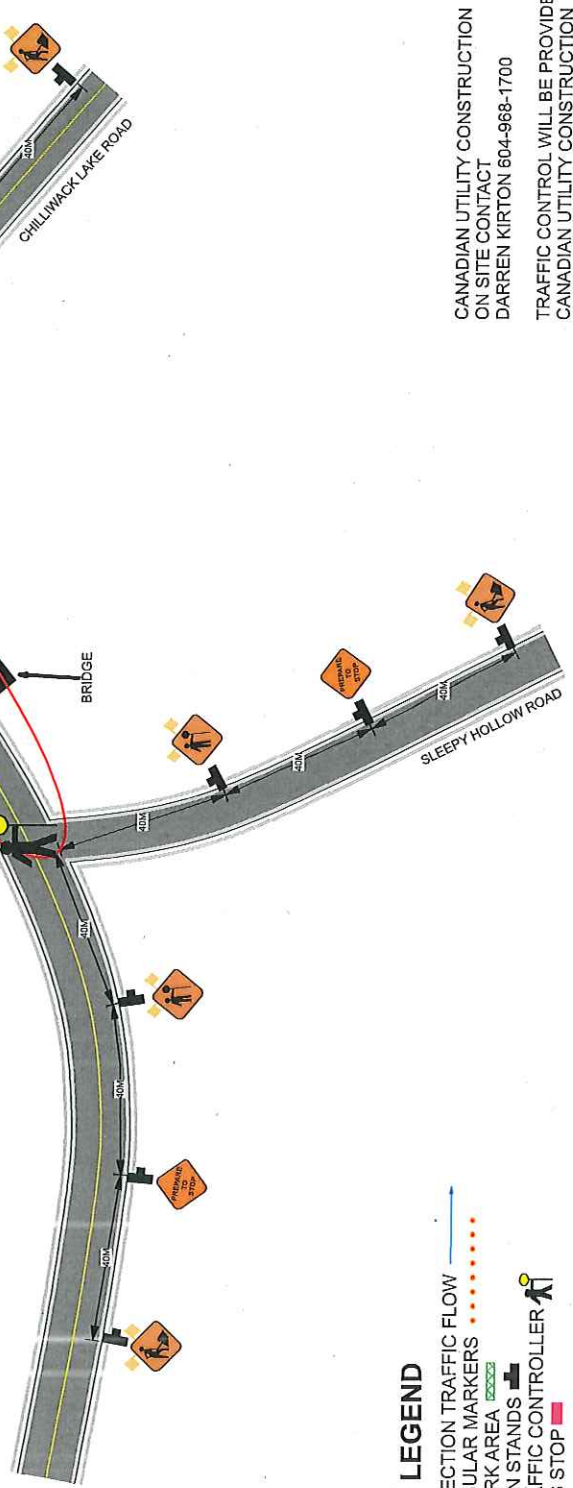
ALL SIGNS ON ALL SIDE STREETS WILL BE PLACED ON TRIPOD STANDS WITH FLAGS

TRAFFIC CONTROL TO HOLD TRAFFIC WHILE LOCATES ARE TAKING PLACE
 MAXIMUM 3 MINUTE TRAFFIC DELAY'S PERIODICALLY

ALL SIDEWALKS AND CROSSWALKS WILL REMAIN OPEN

ACTIVE CONSTRUCTION SITE

PRE LOCATES TO BE DONE WITHIN THE WORK ZONE



LEGEND

- DIRECTION TRAFFIC FLOW
- TUBULAR MARKERS
- WORK AREA
- SIGN STANDS
- TRAFFIC CONTROLLER
- BUS STOP

CANADIAN UTILITY CONSTRUCTION
 ON SITE CONTACT
 DARREN KIRTON 604-968-1700
 TRAFFIC CONTROL WILL BE PROVIDED BY
 CANADIAN UTILITY CONSTRUCTION
 MICHELLE PARKS 604-313-5796